



SHOP FIREPROOFING & COATING

13627 West Hardy RD. Houston, TX

PROFILE

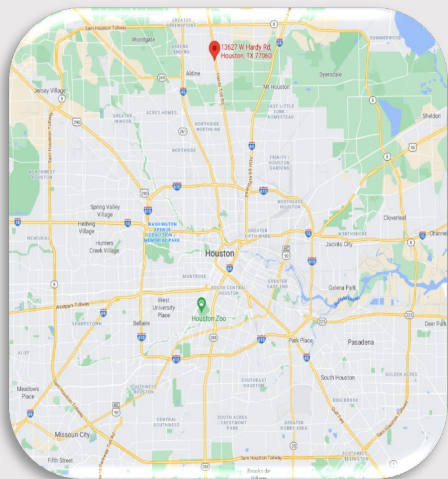
JT Thorpe has established itself as the premier partner for Shop Fireproofing & Coatings and has been safely executing fireproofing projects since 2012. JT THORPE Most recently consolidating to our Houston Fireproofing Complex in early 2017. JT Thorpe's ability to plan, schedule, and execute with skilled craft and leadership helped to ensure projects are completed on time, on budget, and on schedule.

CONTACT

Director of Fireproofing
Ken Cooper
PHONE: (832) 963-1591
EMAIL: KennethC@JTThorpe.com

Project Coordinator
Chris Urban
PHONE: (832) 877-6322
EMAIL: Christopher.Urban@JTThorpe.com

Vice President:
Todd DeCuir
PHONE: (713) 575-0139
EMAIL: ToddD@JTThorpe.com



CAPACITY & SERVICE

Fireproofing & Coatings

- Production can turn a truck load in a two-week time frame.
- Standard Weekly production 30K+ SQFT of intumescent fireproofing
- Standard Weekly production 20K+ SQFT of lightweight and cementitious fireproofing.
- Standard Weekly production 100K+ SQFT of single system coatings
- Application of multiple fireproofing systems: Intumescent (Pitt-Char NX & XP, Chartek 1709 & 2218, Thermo-lag E-100 & 3000P, Jotun 1709), Lightweight Cementitious (Pyrocrete 241 & 341), and Dense Concrete.
- Wide range of Fireproofing Thickness and Ratings: Intumescent from 50 mils to 1050 mils, Lightweight thickness ranging from .1/2" - 2" for both UL 1709 & UL263. Application for both "Stick" and Modular Frames.

OPERATIONS

Facility & Equipment

- 140K SQFT Climate Control Buildings
- 4 Overhead Cranes up to 20 Ton Capacities
- 130' x 35' Largest 4 Nozzle Reclaiming Blast Booth in Texas
- 6-Wheel Blastec Shot Blast Machine – Conveyer/Crane Fed
- 9 Graco XM Plural Component Spray Pumps
- 30+ Acre Secured Laydown
- Onsite Hiring & Safety Training Center

PROJECT TEAM

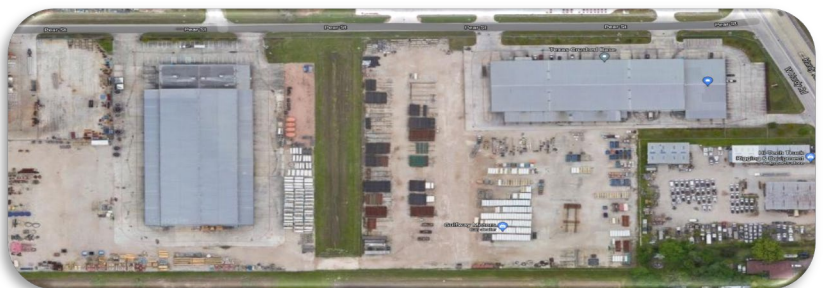
Shop Fireproofing & Coatings Leadership

- Fireproofing Manager
- Project Specific Shop Coordinators (also perform quantity take offs)
- Project Controls assigned to each project
- QA/QC Representatives (NACE certified)
- Up to 9 Pump Crews / 90+ Fireproofers per Shift (800+ Certified Local Craft)
- Worked In partnership with clients and craft to accelerate schedule and address scope growth as needed. Safely reducing project risks and providing options to shifting jobsite conditions

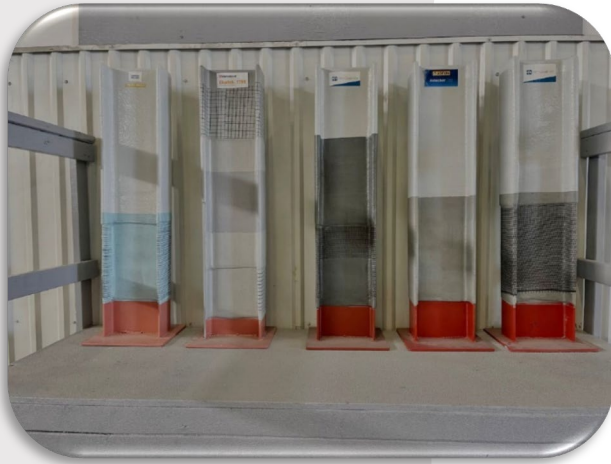
VALUE ADDED SHOP

Solutions Orientated

- Provide cost savings of more than 50% compared to field fireproofing job and reduce schedules with clients by more than 25%.
- We verify quantities with thorough material take off's, track QC with extensive documentation.
- We use our proprietary online tracking tool to locate steel in our shop.



FIREPROOFING & COATINGS FACILITY



Certified Applicator of All Intumescent Fireproofing Systems



130' x 35' Largest 4 Nozzle Reclaiming Blast Booth in Texas with tailers



6-Wheel Blastec Shot Blast Machine – Conveyer/Crane Fed



Experienced and skill craft rolling Chartek 1709 onto steel.



Lightweight Cementitious applied to modular structure.