



PROFILE

JT Thorpe safely installed all of the refractory in the Hot Mill at Steel Dynamics, Inc. new facility in Sinton, TX. JT Thorpe's ability to plan, schedule, and execute with skilled craft and leadership helped to ensure the project was completed on time, on budget, and on schedule.

JT THORPE

PROJECT SPOTLIGHT

STEEL DYNAMICS SOUTHWEST SINTON, TX

SCOPE

Installation

- Stud welded 64,229 anchors and studs throughout two furnaces and duct work.
- Installed 74,950 IFB's in the two furnaces.
- Installed 20 tons of lightweight insulating refractory in the Lower Sidewalls of the furnaces.
- Installed 298 tons of dense castable in the two furnaces.
- Installed 5,021 precast shapes in the Lower Sidewalls.
- Installed 175 vacuum formed pipes sleeves in the burner, peep site, and laser openings.
- Installed 10,933 ceramic fiber modules in the Upper Sidewalls and the Roofs of the two Furnaces.
- Installed 38,554 square feet of insulation board throughout the two furnaces.
- Installed 59,860 square feet of ceramic fiber blanket and paper materials throughout the two furnaces and duct work.
- Installed 7,450 cubic feet of Foamfrax insulation.
- Installed 1,381,500 pounds of shotcrete.

PROJECT TEAM

Large Projects Leadership

- Project Manager
- Construction Manager
- Safety Manager
- (2) Superintendents
- (5) General Foreman
- 40 Refractory Masons and Tenders
- All crafts carried a deep bench to achieve schedule acceleration and address scope growth if needed. Reducing project risk and providing options to changing conditions.

VALUE ADDED

Solutions Orientated

- Provided an alternative option to insulate and install the lining in the waste gas collector in place, accelerating the installation process.

Skilled Labor Pool

- JTT mobilized 40+ skilled experienced craft to site for the installation of the refractory lining.

PROJECT SPOTLIGHT



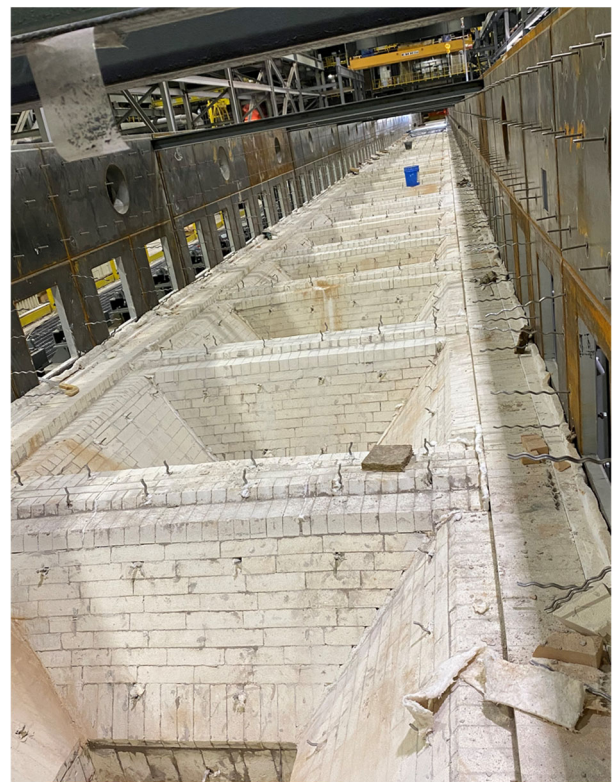
2nd Layer of insulation brick in downcomer.



Inside of the furnace at pass Line.



Insulation blanket, board, insulation brick, and Precast shapes installed around the rollers.



Hoppers after 2 layers of insulation brick and insulation board were installed.