

# PROJECT SPOTLIGHT

## NOTORE CHEMICAL

### PORT HARCOURT, NIGERIA



#### PROFILE

JT Thorpe International (JTTI) has been providing a broad range of services and products to Notore Chemical Industries in Port Harcourt, Nigeria for the past 3-4 years. The Plant is a KBR-style 1000 TPD Nitrogenous Fertilizer Unit that has recently undergone a major revamp project earlier this year.

The background on Notore is we did a small, emergency job back in Sept. 2018 when the dome of the 2ndary Reformer collapsed. We mobilized on short notice by sending a crew and equipment to the site and they have never forgotten this response and work. Since that time we have been planning, procuring materials, fabricating a transfer line and have become their most reliable Supplier / Contractor in the United States. Thus and what started as a \$500,000 emergency job in 2018 has turned into \$4-5M of work that has spanned the past 2-years with this latest Field Service job being the culmination of years of work.

#### SCOPE

##### **Primary Reformer Harp Replacement / Reformer Transfer Line Fabrication and Replacement / Mixed Feed Coil – Fabrication, Mechanical & Refractory**

- Fabricated and Shipped a NEW Primary Reformer Transfer Line
- Replaced (27) Harp Assemblies (Catalyst Tube Banks) from the Primary Reformer, including 100% refractory replacement on the Floor of the Primary Reformer – tunnel walls and floor.
- Replaced Mixed Feed Coil tubes and tube supports in the convection section of the Reformer, including 100% refractory including anchors.
- Replaced Reformer Transfer Line in the Penthouse along with their respective (9) Risers.
- Miscellaneous work done in Secondary Reformer, WH Boiler Shells and Auxiliary Boiler. Furnace Reskin and refractory installed behind the tubes from the outside.

#### PROJECT TEAM

##### **JTTI Richmond Team and Mechanical Subcontractor (Advanced Welding VI - AWVI)**

- JTTI – (1) Project Director.
- JTT Richmond – (2) General Foreman and (4) Brickmasons
- AWVI Management – (1) PM, (1) QC, (1) SME and (2) Foreman
- AWVI Welders – (5) Welders from the United States.
- Nigerian Workforce under JTTI Supervision topped 200+ at peak manpower, when mechanical and refractory works were ongoing.

#### VALUE ADDED

##### **Management & Technical Know-How**

- Coordinated and scheduled all work activities with ALL the crafts so it can be done safely, productively and to the highest quality.
- Engineered solutions and use of equipment to execute and facilitate the work imported from the United States.

##### **Safety First**

- With Covid-19 being as widespread as it was in January through April 2021, extreme precautions were taken with the JTTI Team of (17).
- A few near misses on the job, but for the scope and activities completed in parallel, the measures taken resulted in ZERO recordable injuries for the US-based Team and the Nigerian workforce.

# PROJECT SPOTLIGHT



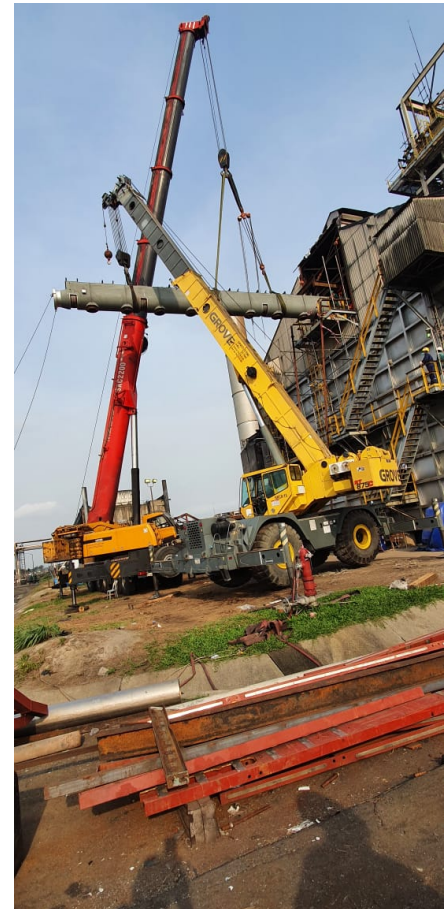
220T crane dropping in NEW Harp Assemblies (27) total from the Roof of the Penthouse.



Penthouse view of the OLD Transfer Line and OLD Harp Assemblies below during the Demolition Phase.



Tandem Cranes (220T + 60T) removing the OLD Transfer Line from the Penthouse in a single 80ft Long Piece



Tandem Cranes (220T + 60T) placing the NEW Transfer Line into the Penthouse in a single 80ft Lone piece. Rigging Plan was done by JTI Subcontractor.



# PROJECT SPOTLIGHT



Tube Replacement ongoing at the Mixed Feed Coil. Crew used an Air Tugger to pull in new tubes sent from the US.



Tunnel wall inside Primary Reformer in construction after NEW Harps were put in place.



AWVI TIG welding on Harps – drain nozzles and TI sleeves.



Completed Transition Roof using Z-Blok modules with brick Baffle Walls completed